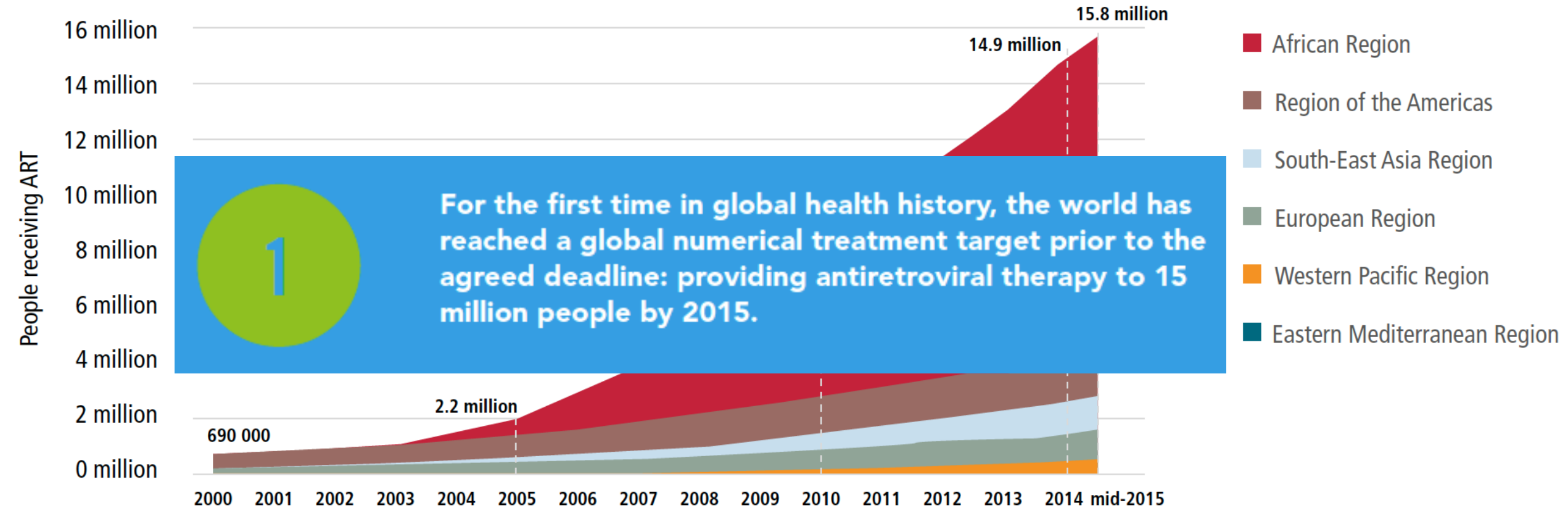


What is differentiated service delivery?

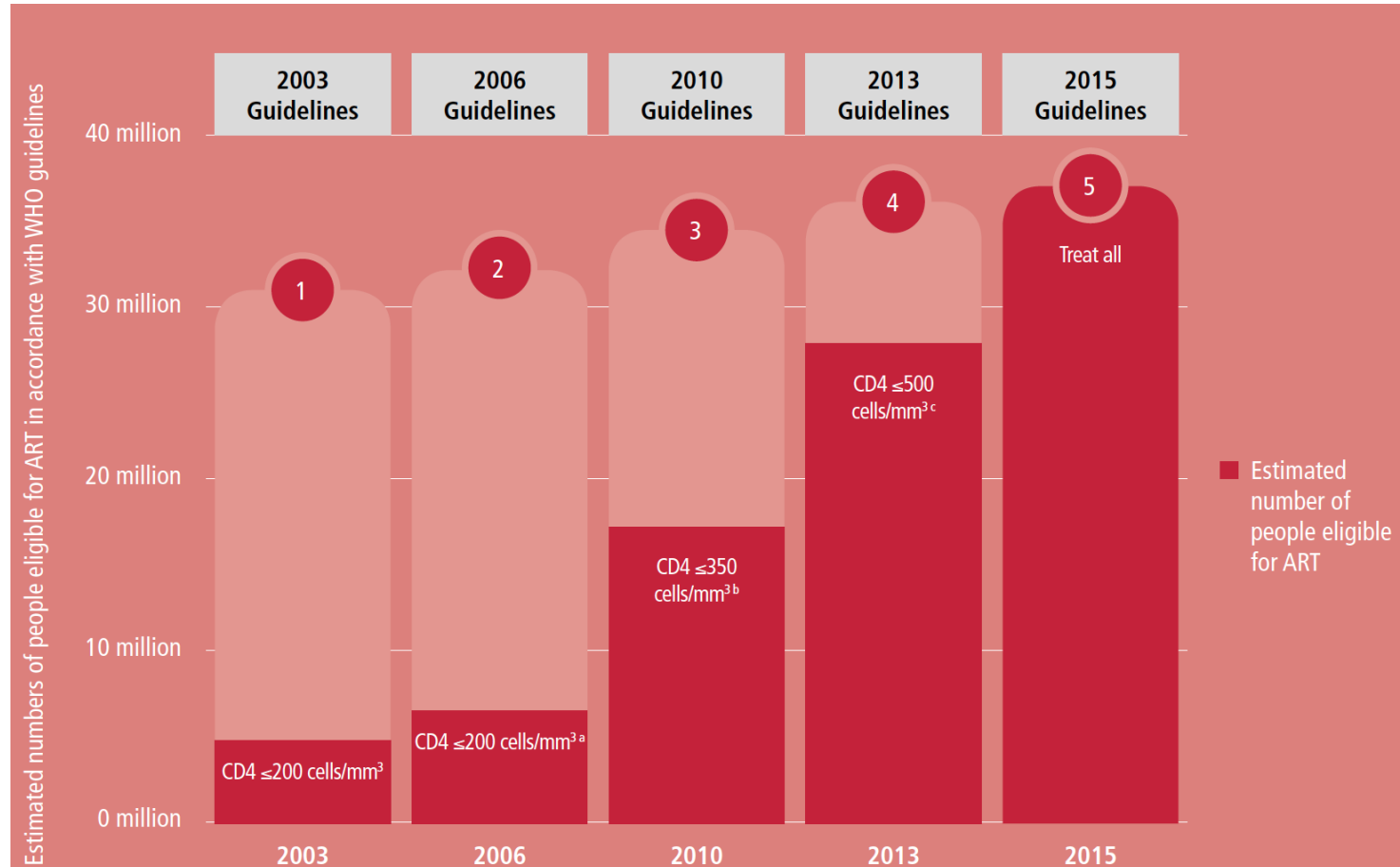
Leveraging differentiated service delivery for HIV treatment to strengthen contraceptive care

Dr Anna Grimsrud
International AIDS Society
dsd@iasociety.org

Success of antiretroviral therapy (ART) scale-up



In 2015, WHO recommended “treat all” and “differentiated care”



Foreword by Dr Margaret Chan, Director-General, WHO

Consolidated guidelines on the use of antiretroviral drugs for treating and preventing HIV infection - second edition, 2016



WHO

With this update of the consolidated guidelines on the use of antiretroviral drugs for treating and preventing HIV infection, WHO, for the first time, recommends that all people living with HIV be provided with antiretroviral therapy (ART). This will bring us one step closer to achieving universal access to HIV treatment and care and ending AIDS as a public health threat. These guidelines also make service delivery recommendations on how we can expand coverage of HIV treatment to reach the 37 million people living with HIV. Key recommendations aim to improve the quality of HIV treatment and bring us closer to the universal health coverage ideals of

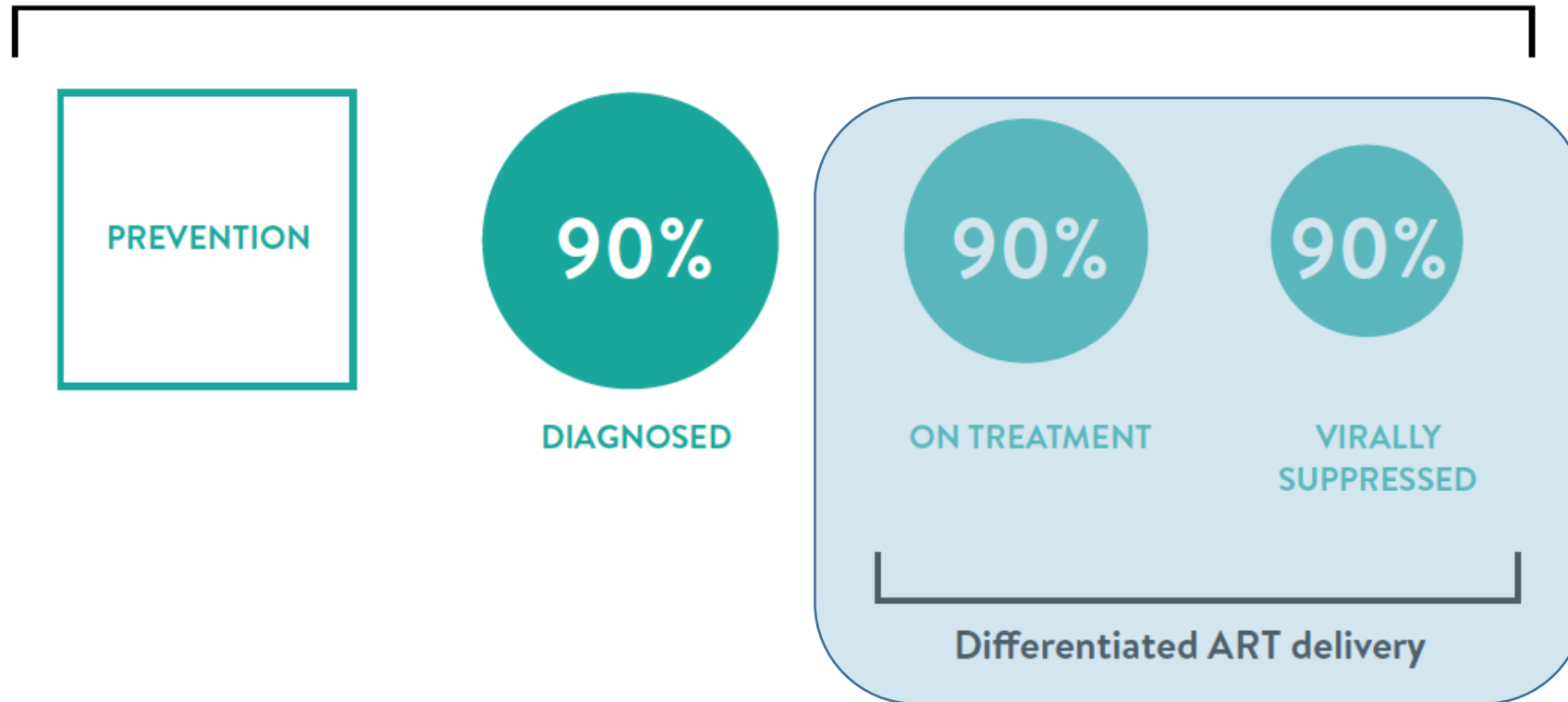
integrated services, community-centred and community-led health care approaches, and shared responsibility for effective programme delivery.



Differentiated service delivery (DSD), or differentiated care, is a client-centred approach that simplifies and adapts HIV services across the cascade, in ways that both serve the needs of PLHIV better and reduce unnecessary burdens on the health system.

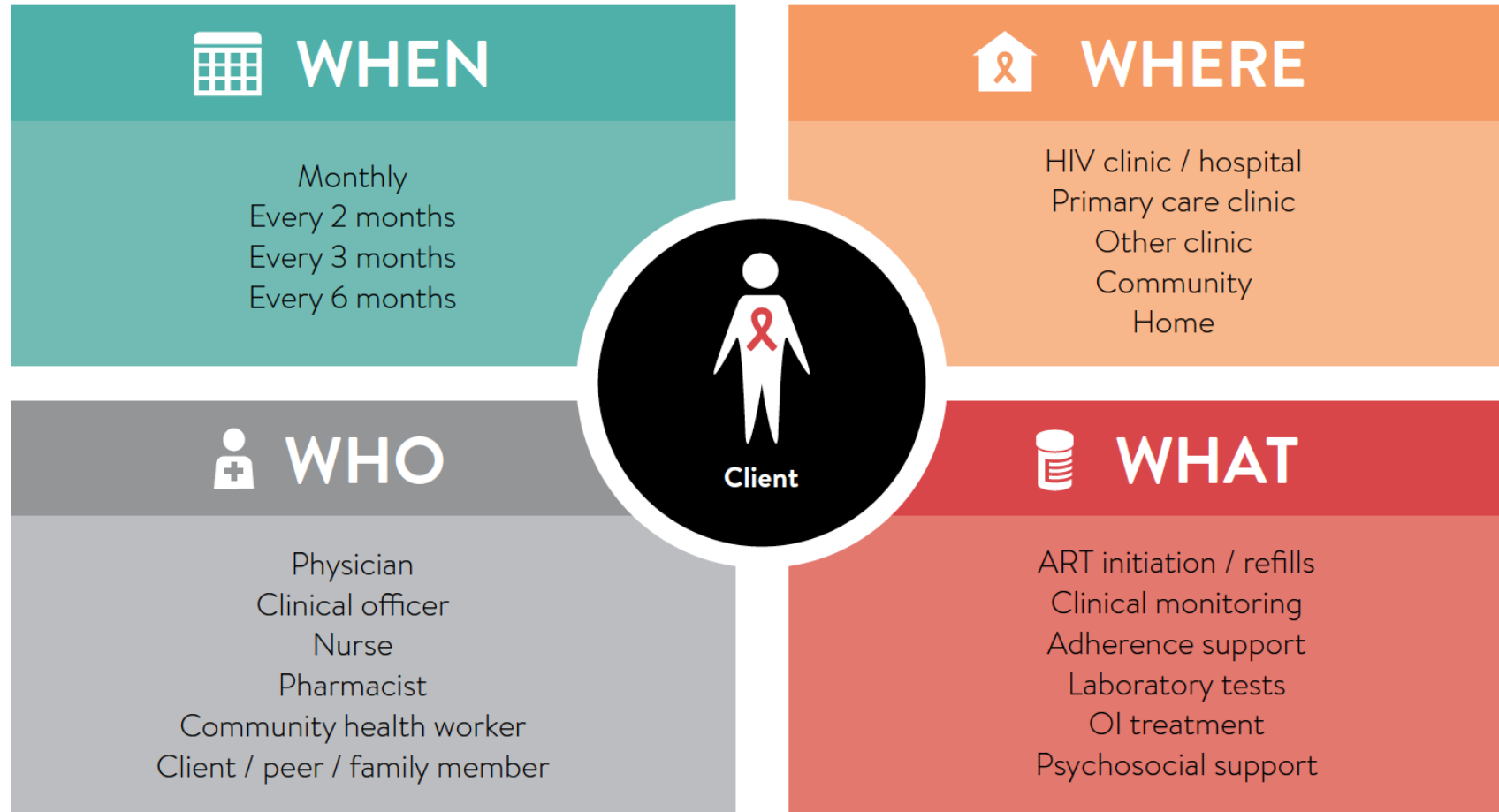
DSD applies across the HIV care continuum

Differentiated service delivery for HIV



But today, we're going to focus on DSD for HIV treatment

Building blocks of service delivery





ART adherence clubs



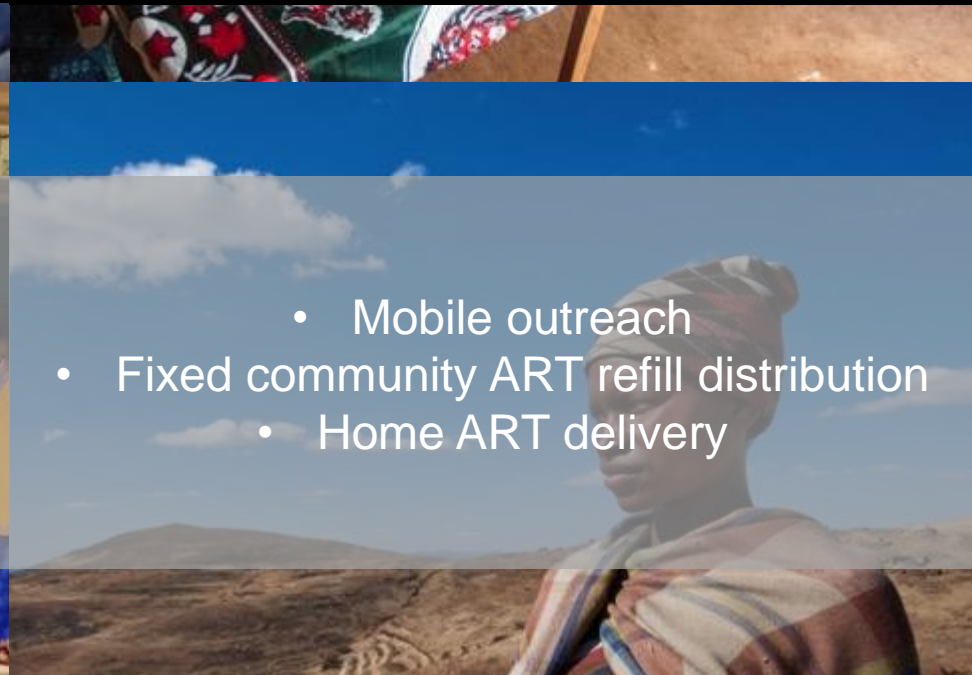
Community ART groups (CAGs)

Health care worker-managed group

Client-managed group



Fast track ART refill collection at facility



- Mobile outreach
- Fixed community ART refill distribution
- Home ART delivery

Facility-based individual

Out-of-facility individual

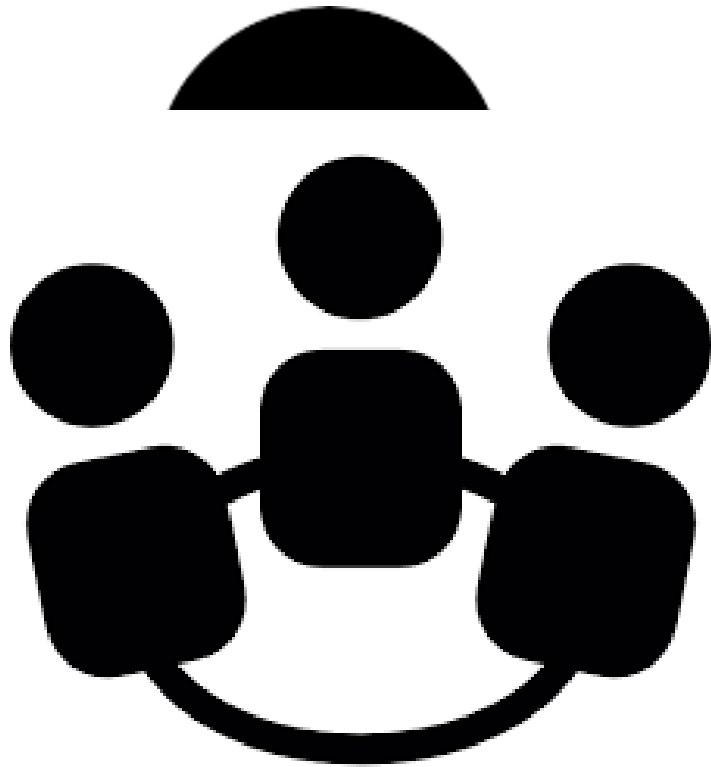
Community Adherence Refill Groups (CARGs) in Zimbabwe

	ART refills	Clinical consultation	Psychosocial support
WHEN	3-monthly	Annual	Monthly (or more, as required)
WHERE	Community One member collects for the group		Community
WHO	Peers	Clinician	Peers
WHAT	ART refill CTX refill Peer support	Full clinical consultation Rescripting ART & CTX refill	Peer support

HOW CAN WE LEVERAGE AND ENSURE CONTRACEPTIVE CARE?

Evolution of HIV service delivery

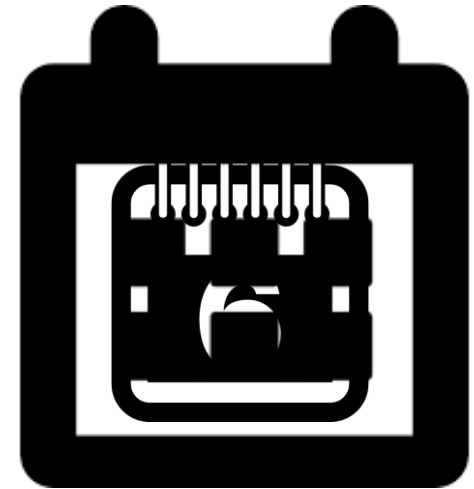
WHO



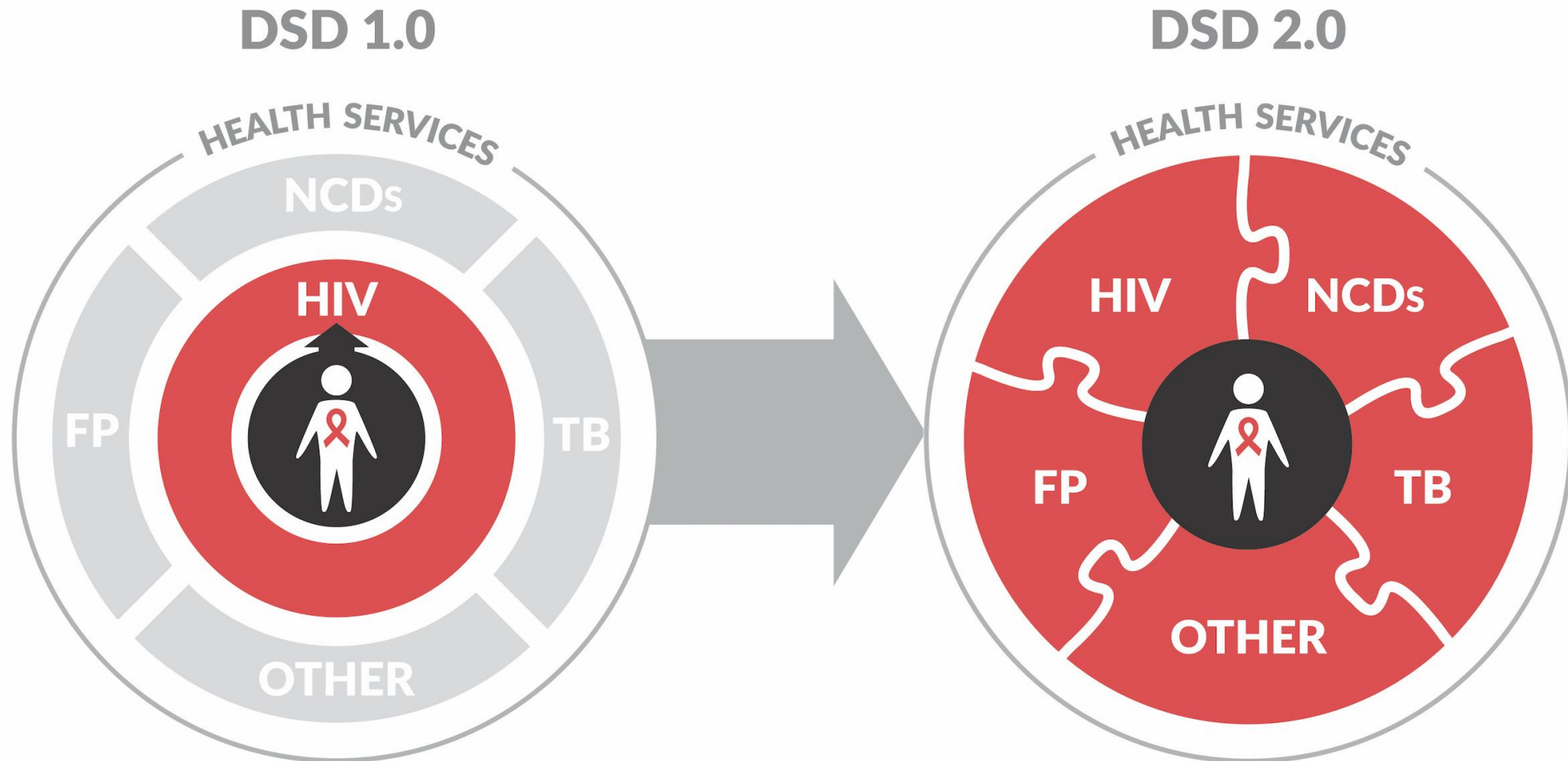
WHERE



WHEN



Differentiated service delivery is not just for HIV treatment, or just for HIV



Ehrenkranz P et al, Expanding the vision for differentiated service delivery: a call for more inclusive and truly patient-centered care for people living with HIV, JAIDS, 2020, in press.



www.differentiatedservicedelivery.org



It's time to deliver differently

