

# FP2030 Gender Strategy

FEBRUARY 2023

FP  
»»2030



# For FP2030, an intentional approach to gender equality:

- ① Makes our work more effective in advancing both family planning and gender equality
- ② Makes our work more resonant with diverse stakeholders
- ③ Aligns our work with our values

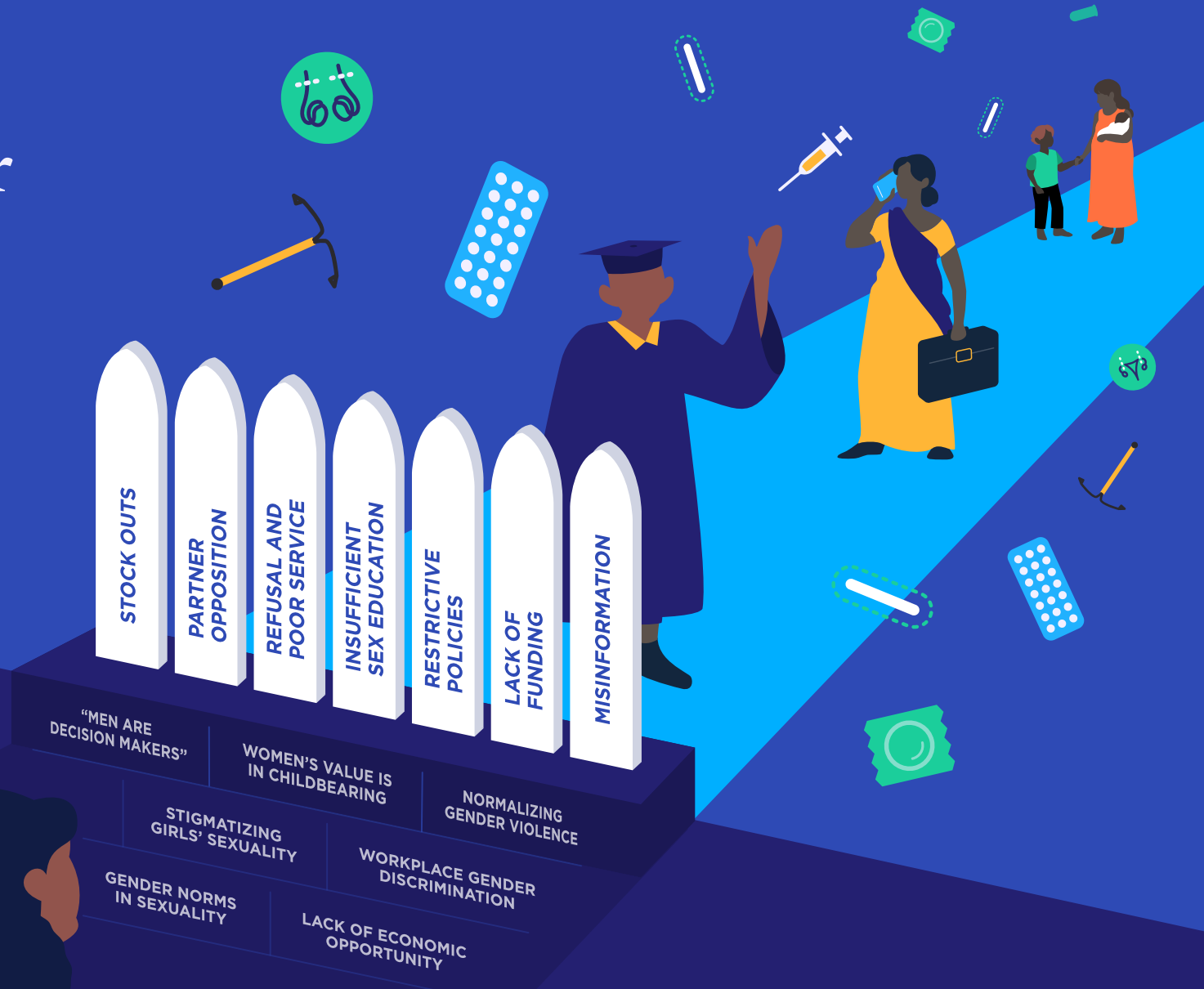


**Gender is at the root of every person's ability to make and carry out informed decisions about sex, contraception, and sexual and reproductive health.**

By addressing gender, family planning programs, policies, and commitments can accelerate and sustain impact while advancing gender equality.

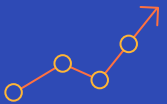


# Gender norms and power dynamics create barriers to FP access



SECTION 1

# The Challenge



THE CHALLENGE



**1 in 5**

women aged  
20–24 was married  
before age 18.



**Child marriage  
depresses  
contraceptive  
prevalence and  
reproductive agency**

## THE CHALLENGE



# 70%

of health workers are women, but only 25% are in senior positions. The gender pay gap is 26%.



**Gender discrimination in the health workforce affects service access and quality**

## THE CHALLENGE



**<1%**

of total funding for gender equality projects goes to women's rights organizations and movements.



**Women's rights groups are essential for sustained advocacy for SRHR**



THE CHALLENGE



**1 in 4**

women experience intimate partner violence before age 50.



**Reproductive coercion—interfering with or sabotaging contraception or coercing pregnancy—correlates with intimate partner violence**

SECTION 2



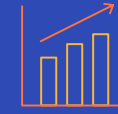
# The Evidence



THE EVIDENCE



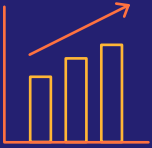
**With greater funding and scale, gender-transformative approaches will advance gender equality and accelerate progress on contraceptive access and use.**





**Addressing reproductive coercion and other types of Gender Based Violence within the health sector can help increase contraceptive use, reduce violence, and connect survivors to the services they need.**





**In countries where contraceptive prevalence has plateaued, demand-side interventions promoting positive gender norms can be more effective than supply-side approaches.**

Skinner et al 2021



## THE EVIDENCE



**Feminist movements—especially when working in concert with women leaders—have succeeded in increasing funding for and access to contraceptive and other SRHR services.**

Mama Cash, 2020



## THE EVIDENCE



**“Fostering discussions between couples and using prompts that promote gender equality, have both increased use of contraception as well as increased gender equity.”**

High Impact Practices in Family Planning (HIP). Promoting health couples' communication to improve reproductive health outcomes.



# What does FP2030 bring to the gender space?

FP2030 is uniquely placed to build on its global brand and connect family planning, SRHR and gender equality, to catalyze action among coexisting but often siloed spaces by:

- 1 Articulating a bold stand for gender equality
- 2 Modeling gender integration in our own structures and processes
- 3 Pushing for incorporation of gender equality in family planning policies and programs
- 4 Bringing leadership to development and use of recognized metrics for reproductive empowerment
- 5 Bringing local context and expertise into gender integration





SECTION 3



# Gender Strategic Framework



GOAL

Drive transformative progress in strengthening individuals' reproductive power and advancing gender equality



# Reframing FP2030's work with a focus on reproductive power

- Advancing thought and practice to measure reproductive power
- Champion domestic and global funding for programs—in addition to products
- Inclusivity of all genders
- SRHR vision with contraception focus
- Engaging men as partners, users, and allies



# Engaging local women-led organizations explicitly working toward gender equality and regional gender experts

- Outreach to regional/local gender equality groups through hubs
- Connecting local gender experts to commitment makers and FP2030 data experts
- Including women's rights groups among FP2030 focal points



# Channeling resources into gender transformative programming

- Working for greater investment in gender-transformative approaches, including male engagement
- Elevating gender transformative HIPs
- Capacity building and south-south technical assistance
- Increasing internal gender capacity



# Thank You!

To learn more, visit: [fp2030.org/gender](https://fp2030.org/gender)



FP  
»» 2030