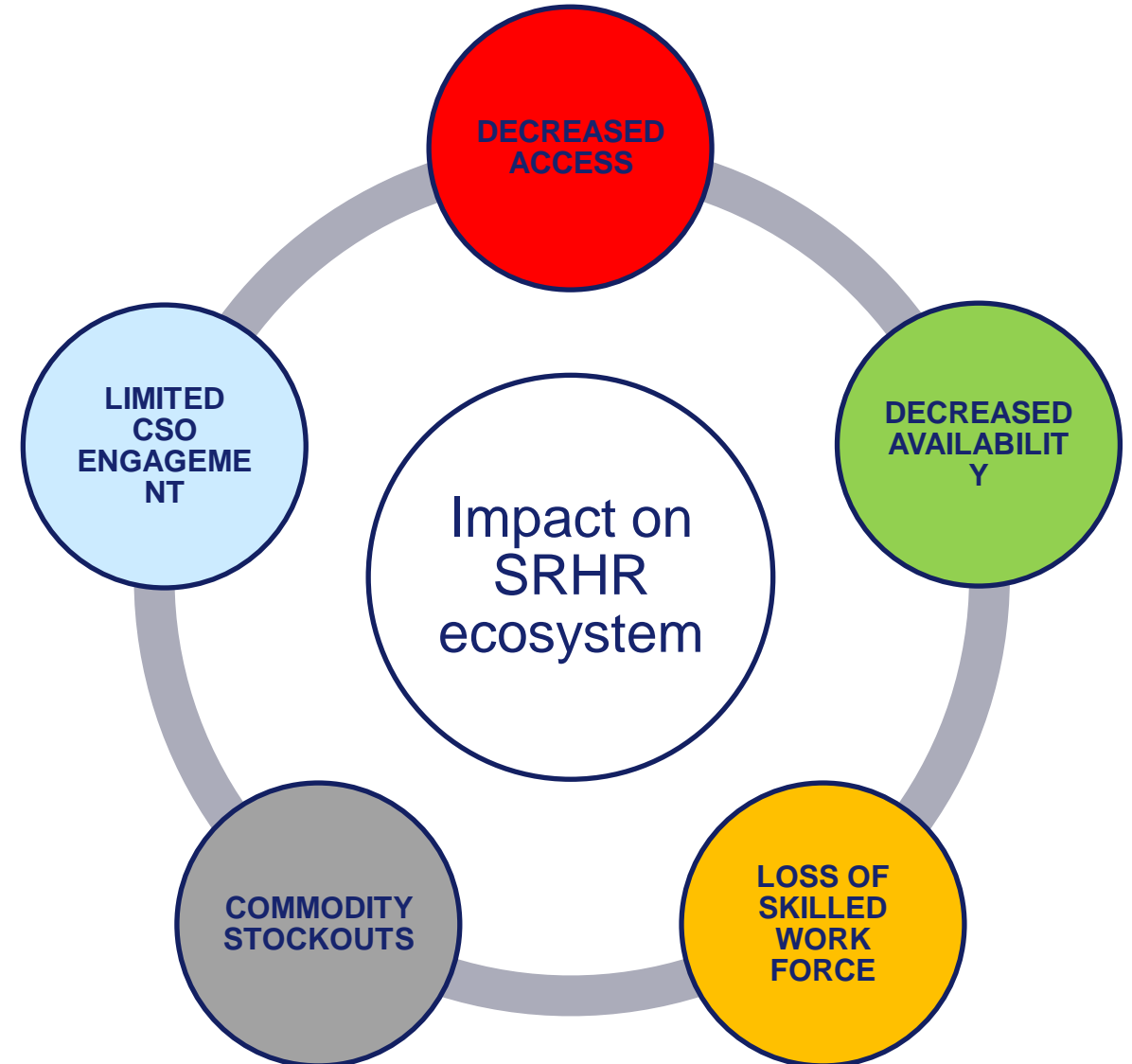


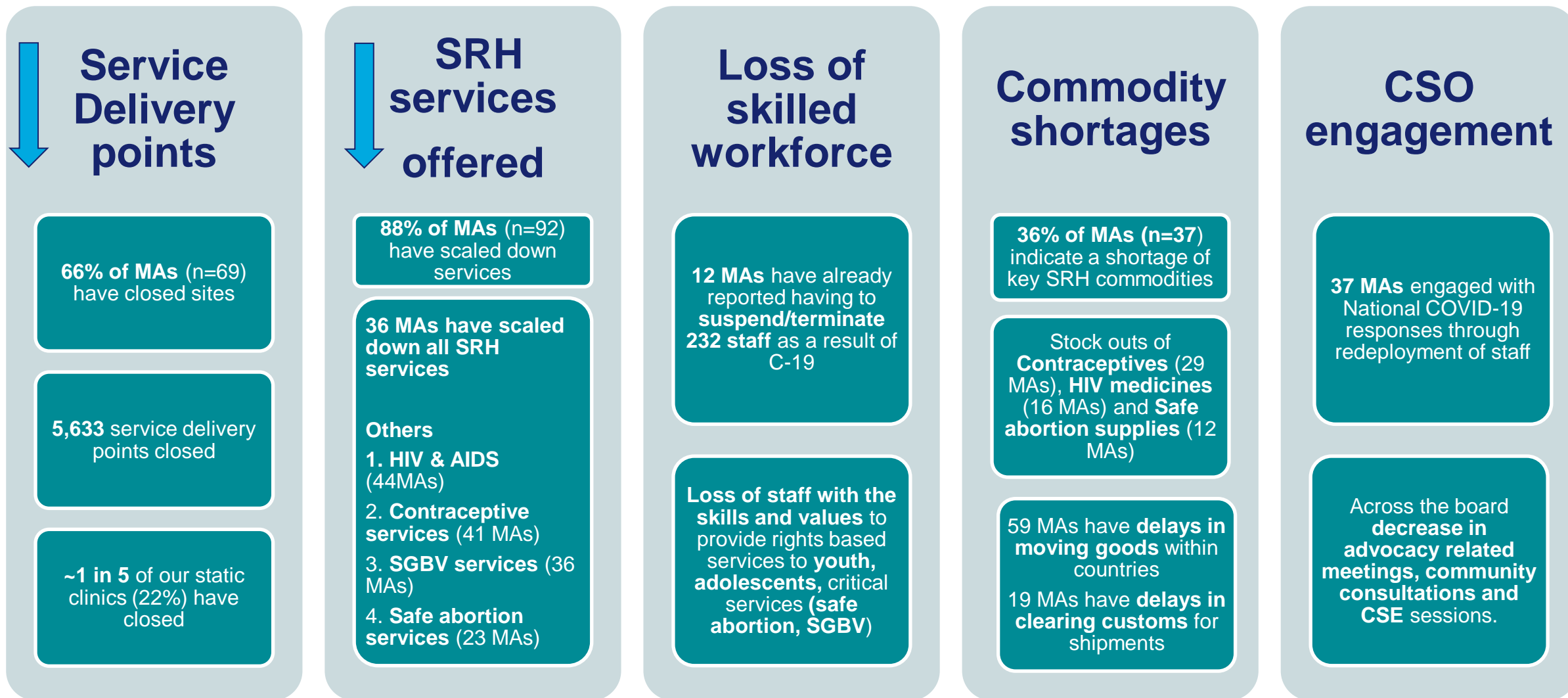
IMPACT OF COVID -19 ON IPPF OPERATIONS

COVID -19 & SRHR Landscape 121 countries – 6 continents March 28-31 2020

- Online survey in 3 languages
- Round 1 analysis complete – additional in-depth analysis underway
- Focus was to assess
 - Impact of COVID-19 on MAs operations
 - Impact on SRH services
 - Document response measures and opportunities
- 81% response rate (n=149) – all six continents covered, 104 of 121 MAs provide SRH services



SCALE OF IMPACT ON SRHR ECOSYSTEM



INNOVATION IN SRHR SERVICE PROVISION

Service provision through Telemedicine

9 MAs that use Telemedicine to provide SRH services – includes provision of SRH information, counselling, consultation and follow up care, or referrals

4 MAs offer clinical consultations through telemedicine - Australia, Estonia, Georgia, & The Philippines.

Digital provision of CSE

24 MAs currently offer CSE through social media, Whatsapp, Skype or other virtual channels

Morocco, Bosnia & Herzegovina has shifted to virtual approaches to provide services

Afghanistan has capacity to initiate hotlines to support further

Palestine is keen to scale up their current hotline (single line to multiple lines)

Other innovative approaches

12 MAs currently offer home delivery/doorstep delivery of SRH products like contraceptives, pregnancy test kits

MA in **Puerto Rico** has already piloted consultations for a week and has a matched grant of up to \$40,000 available for SRH services

MA in **Ireland** has received Govt approval to provide telephone consultations for urgent and time sensitive services

Interest from MAs in Benin, Burkina Faso, Cambodia, El Salvador, Haiti, India and Romania (among others)

How can we collaborate on IPPF's C-19 emergency response?

1. Support IPPF's C-19 efforts by contributing to the **DG Emergency Fund**
2. Provide **match funding** to IPPF's **online Global C-19 Appeal**
3. **Partner** with us to **design new solutions/innovative approaches** to protect SRH services and adapt to the changing environment